

DISPLAY



features you'll love

**SERVE IN STYLE**  
A 900mm-wide oven, cooktop and integrated rangehood make up a beautiful gourmet kitchen.

**HOME MOVIES**  
Private and cosy, movie nights in are made even better with the spacious theatre room.

**YES MASTER**  
Residing at the rear of the home, parents can enjoy their own slice of paradise in the designer master suite.

# CONJURING SPACE

There is an air of simplicity that flows through this modern tribute to refined living.

Not only does the Sandgate by Maxim Homes transcend the conventional qualities of the classic contemporary home, it also dispels the assumption that builds on narrow lots fail to convey space and openness.

"The home has been built on a narrow 10m-wide lot, and most visitors are surprised when they hear this as it looks and feels anything but narrow," Maxim Homes director James Tribe says.

Opting for a clean, architectural elevation over the traditional look of a home, the Sandgate informs onlookers of its creative charm before they even step inside.

"The colour scheme selected was based on earthy tones and captured best with the raw stone cladding applied to the blade feature wall," James says.

To the rear of the home, parents are whisked away to their very own slice of paradise in the spacious designer master suite, which offers an abundance of room for privacy and relaxation.

With a good book for company, this space will allow for hours to pleasantly drift by uninterrupted. Should you choose to venture to the backyard from the master suite, sliding doors make this only too easy.

"The master suite provides adequate separation from the remaining bedrooms," James says.

Make cosy movie nights in the company of family or friends a regular treat in the comfort of your very own spacious home theatre, self contained towards the front of the home.

"The location of the theatre is ideal for families as it's located close the main living areas, however is adequately separated to provide privacy," James says. "The location is ideal for bedrooms two and three and also lends itself to becoming a fourth bedroom for larger families."

Envision yourself the envy of your cooking aficionado friends and create culinary delights atop stone benchtops, with a 900mm-wide oven, cooktop and integrated rangehood adding to the style and practicality of a beautiful gourmet kitchen.

"The kitchen has been positioned to sit off to the side of the living and dining areas, and with a full width window as the splashback so there is natural light coming in both sides of the main living areas," James says.

In order to eliminate unused space, you will find the laundry accessible directly through the kitchen via a cavity sliding door.

Should you wish to entertain outdoors, the Sandgate has you covered with TREX composite decking installed at the same height as the floor level of the home.

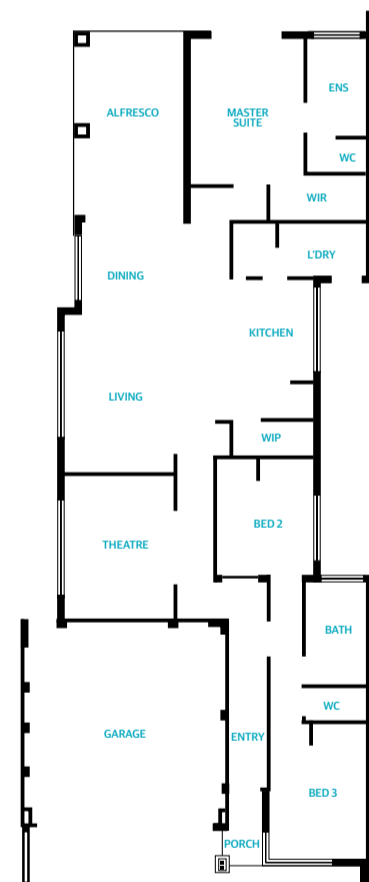
"The alfresco is accessed through a double stacker door system as we wanted this space to feel like it's part of the dining area," James says.

Back inside, 31-course ceilings to each of the living areas denote a beautiful sense of openness, whilst mirrored sliding robes in each of the minor bedrooms leave no room for disappointment.

"The Sandgate is a home designed and priced to suit a wide demographic of buyers, be they first homebuyers, young families or even people looking to downsize," James says.

**SANDRA ARGESE**

**SANDGATE**  
Maxim Homes



Checklist

- PRICE** \$157,900
- LOCATION** 5 Whiteoak Way, Piara Waters
- OPEN** Mondays and Wednesdays, 2-5pm; Saturdays and Sundays 1-5pm
- SIZE** 198.54sqm
- WIDTH** 9.99m
- DEPTH** 24.79m
- GARAGE** 34.40sqm
- FEATURES** Theatre room, architectural elevation, gourmet kitchen, private master suite, high ceilings.
- PHONE** 9446 9441
- WEBSITE** www.maximhomes.com.au

